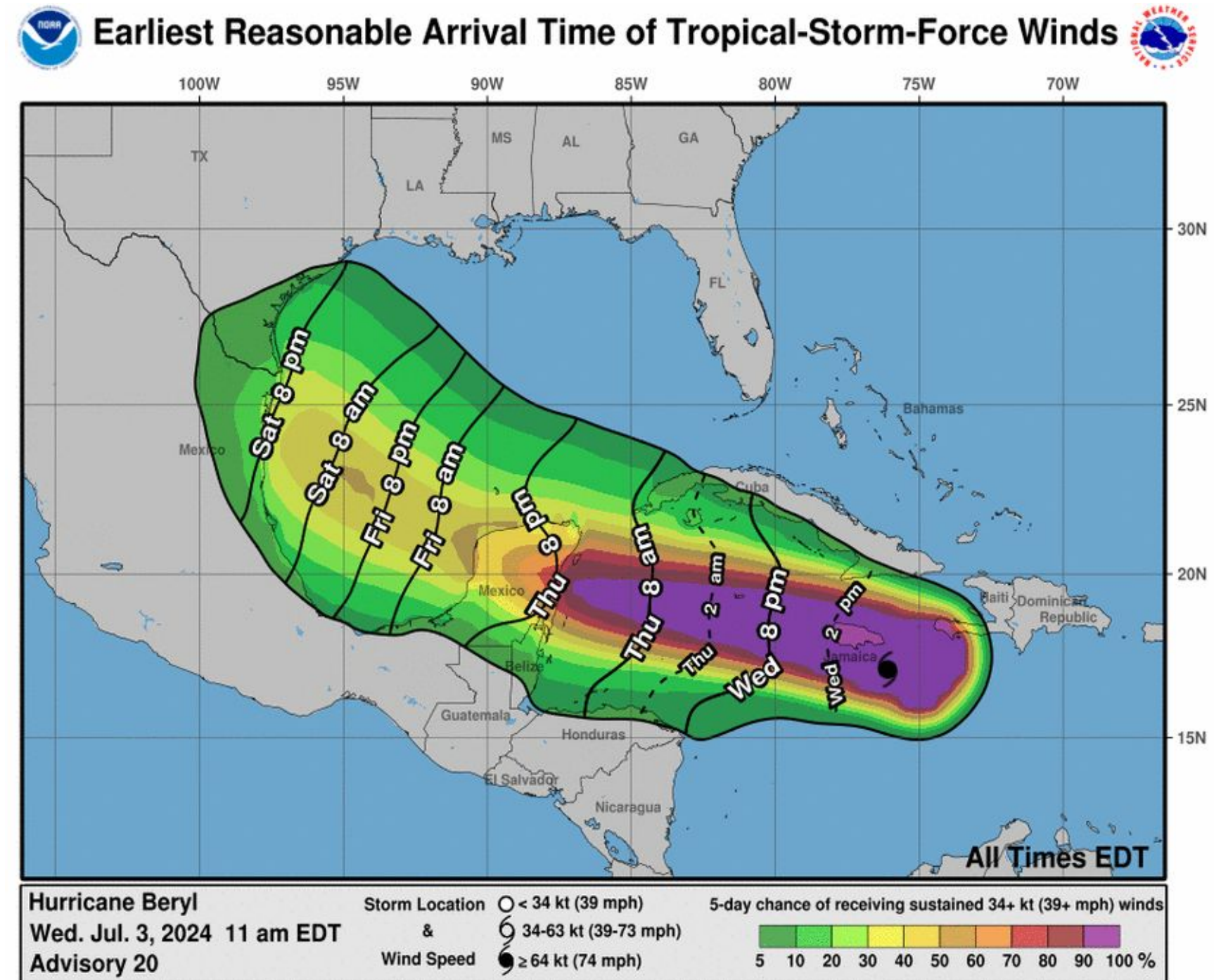




Hurricane Beryl Briefing

NEW Key Points

- Major Hurricane Beryl continues to move WNW at 20 mph and is expected to reach the Yucatan Peninsula early Friday morning.
- Uncertainty (both with strength and track) remains with Beryl once it emerges into the Southwest Gulf Friday or Friday night.
 - ◆ Looking more likely it makes landfall across far northeast Mexico or the South Texas Coast as a Category 1 Hurricane (plan for a Cat 2).
- Earliest reasonable time of arrival of TS force winds is Saturday night. Most likely time is Sunday afternoon.



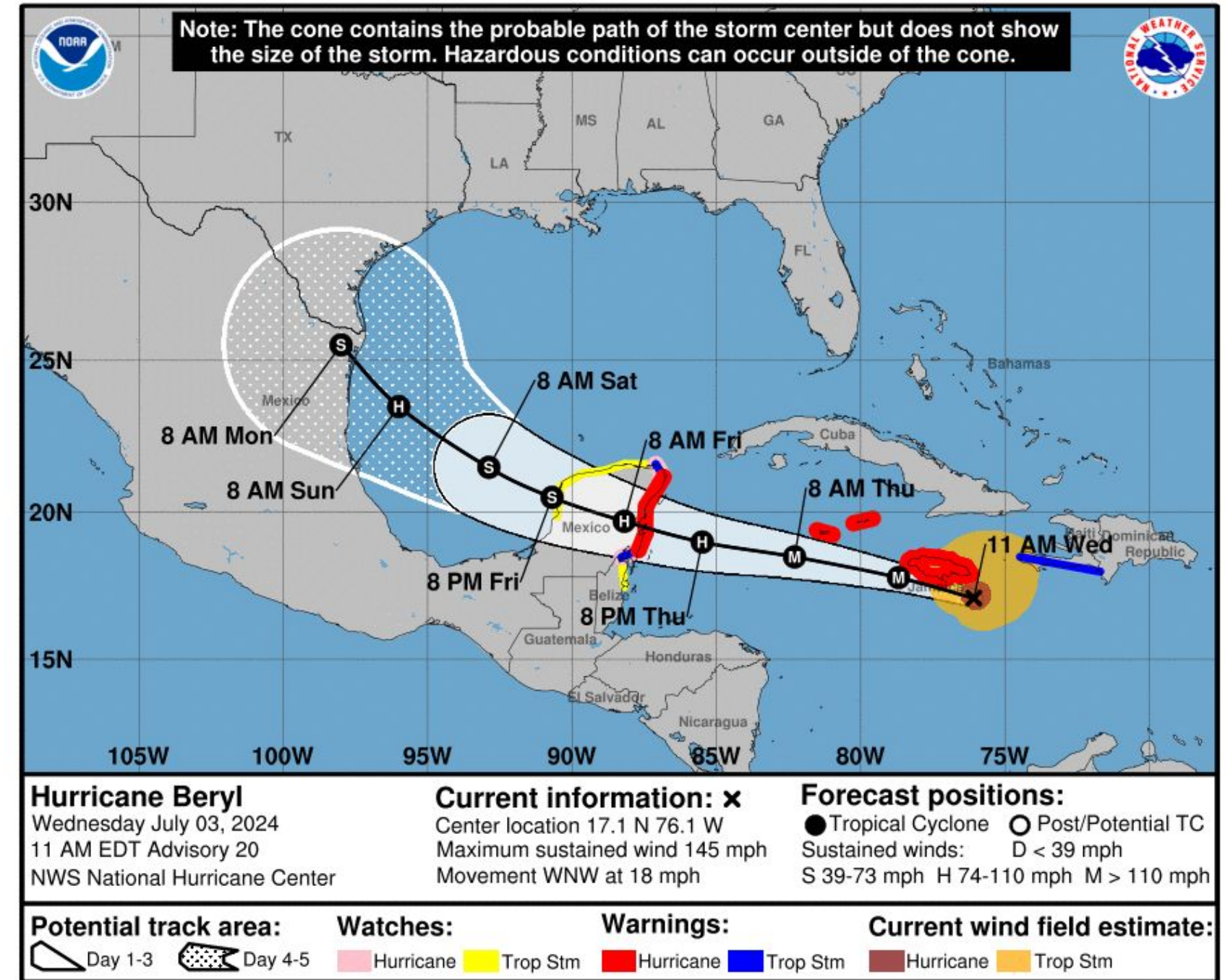


Hurricane Beryl Briefing

NEW

Key Points Continued

- Regardless of exact track, an increase in dangerous rip currents/tidal runup along the coast is expected over the Holiday Weekend. Seas will begin to increase as well.
 - ◆ This will make for dangerous swimming conditions!
- Any outer rainbands may be capable of producing wind gusts at or above tropical storm force and an isolated tornado will be possible, particularly from Sunday through Monday.





Risk Outlook for South Texas

July 3, 2024
11:30 AM

Hurricane Beryl

	Wednesday, Jul 3	Thursday, Jul 4	Friday, Jul 5	Saturday, Jul 6	Sunday, Jul 7	Monday, Jul 8	Tuesday, Jul 9
Coastal Plains					Rain Bands May Arrive Periods of Heavy Rain & Strong Winds	Rain Bands May Arrive Periods of Heavy Rain & Strong Winds	
Coastal Bend					Rain Bands May Arrive Periods of Heavy Rain & Strong Winds	Rain Bands May Arrive Periods of Heavy Rain & Strong Winds	
Victoria Crossroads					Rain Bands May Arrive Periods of Heavy Rain & Strong Winds	Rain Bands May Arrive Periods of Heavy Rain & Strong Winds	
Brush Country					Rain Bands May Arrive Periods of Heavy Rain & Strong Winds	Rain Bands May Arrive Periods of Heavy Rain & Strong Winds	
Marine			Increased Swells Rip Currents	Dangerous Seas Poss. Rip Currents	8-10 Foot Seas* Rip Currents	Dangerous Seas Poss. Rip Currents	Rip Currents

**Currently looking at the potential for at least 8-10 foot seas, though these numbers could change significantly depending on the exact track Beryl takes and how strong it gets as it moves over the Southwest Gulf of Mexico.*

Risk Levels

Little to None

Minor

Moderate

Major

Extreme



National Oceanic and
Atmospheric Administration
U.S. Department of Commerce

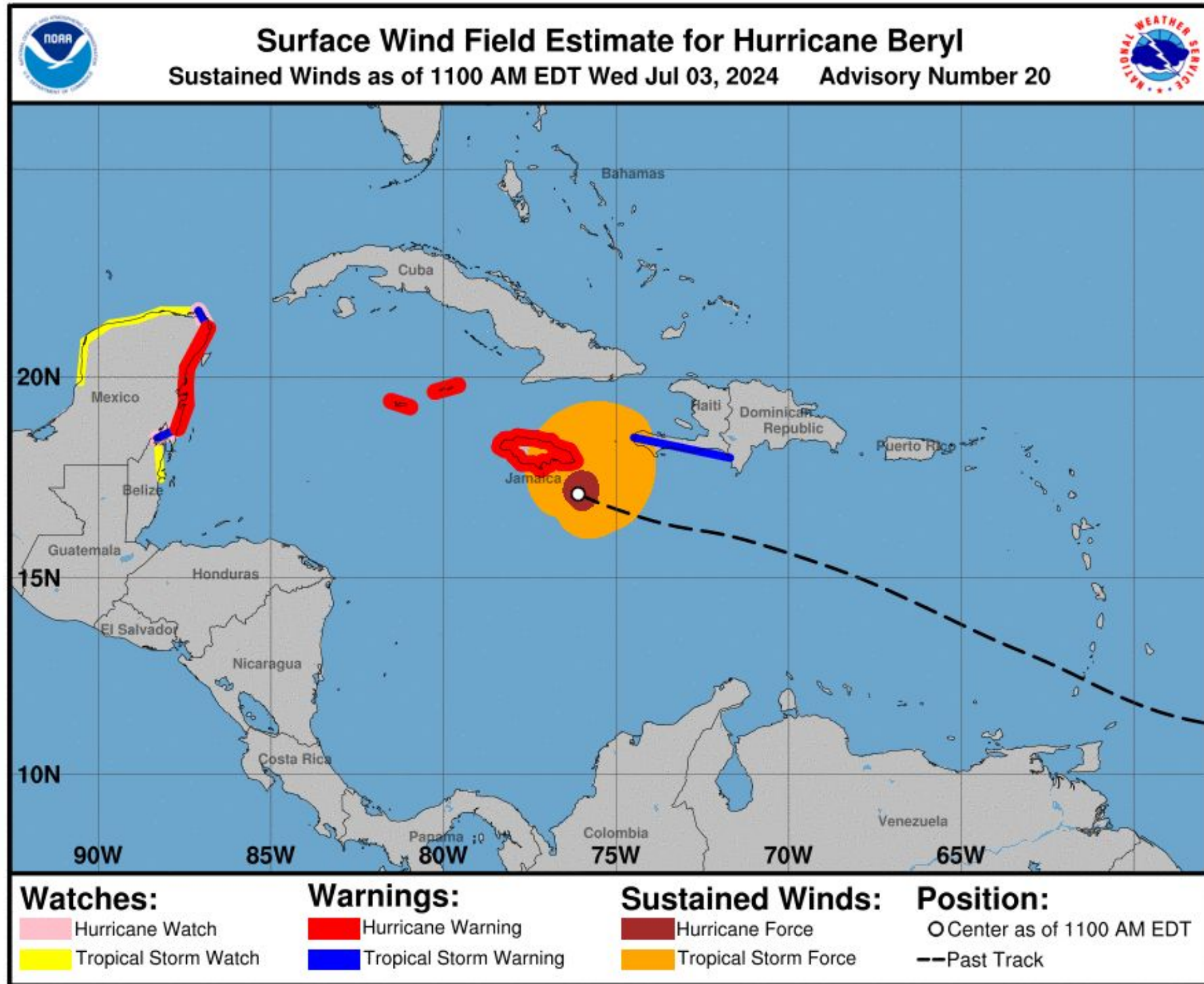
National Weather Service
Corpus Christi, TX



Situation Overview

July 3, 2024
11:30 AM

Hurricane Beryl



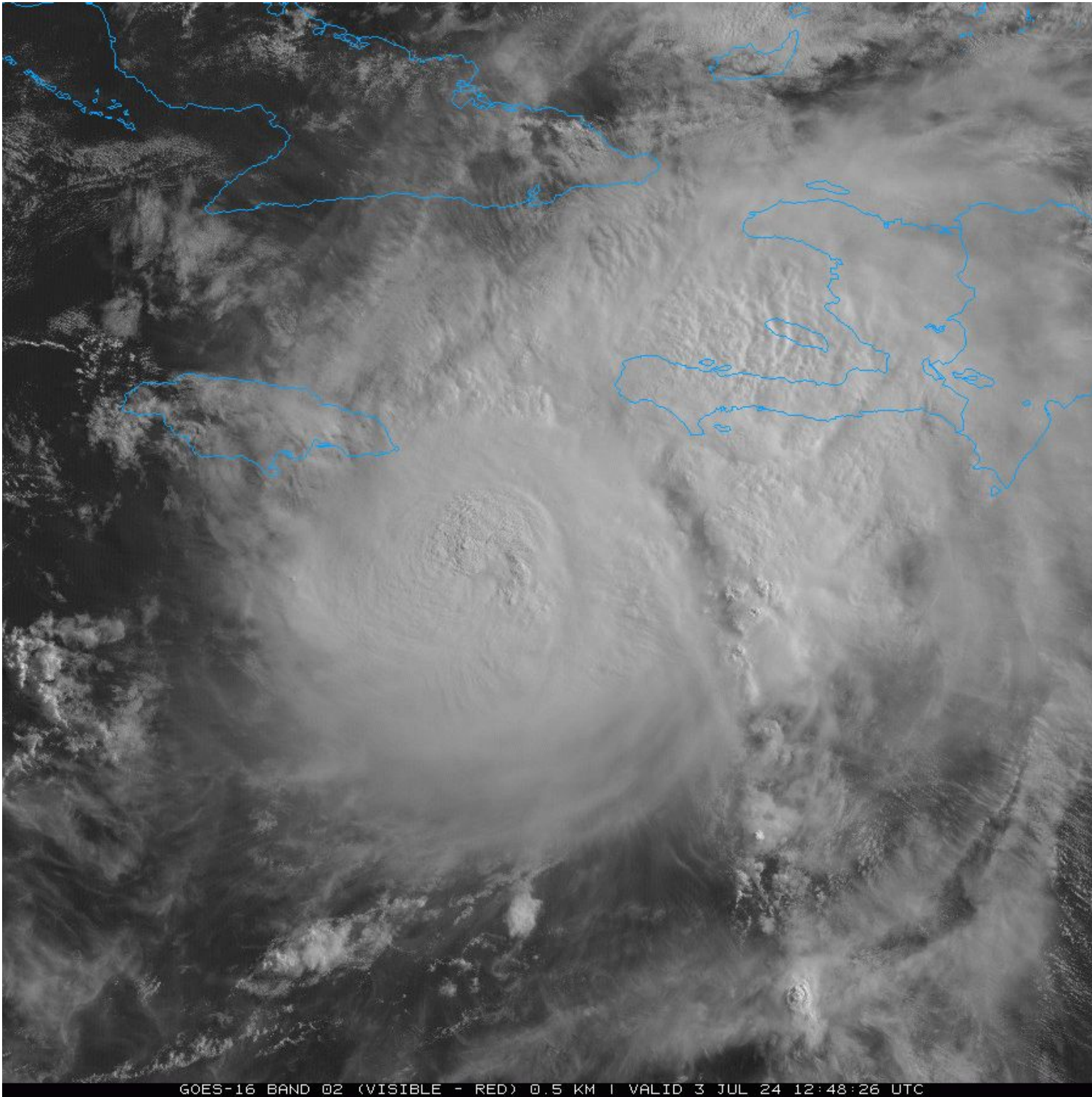
- Located near Jamaica and moving WNW at 20 mph.
- Tropical Storm Force Winds extend 185 miles from the center.
- Hurricane Force Winds extend 45 miles from the center.



Current Satellite View

July 3, 2024
11:30 AM

Hurricane Beryl



Significant increase in wind shear has begun to help weaken Beryl.

Eye is now closed off. Slow weakening expected to continue until it reemerges over the Gulf, where it will then strengthen again before making landfall.



National Oceanic and
Atmospheric Administration
U.S. Department of Commerce

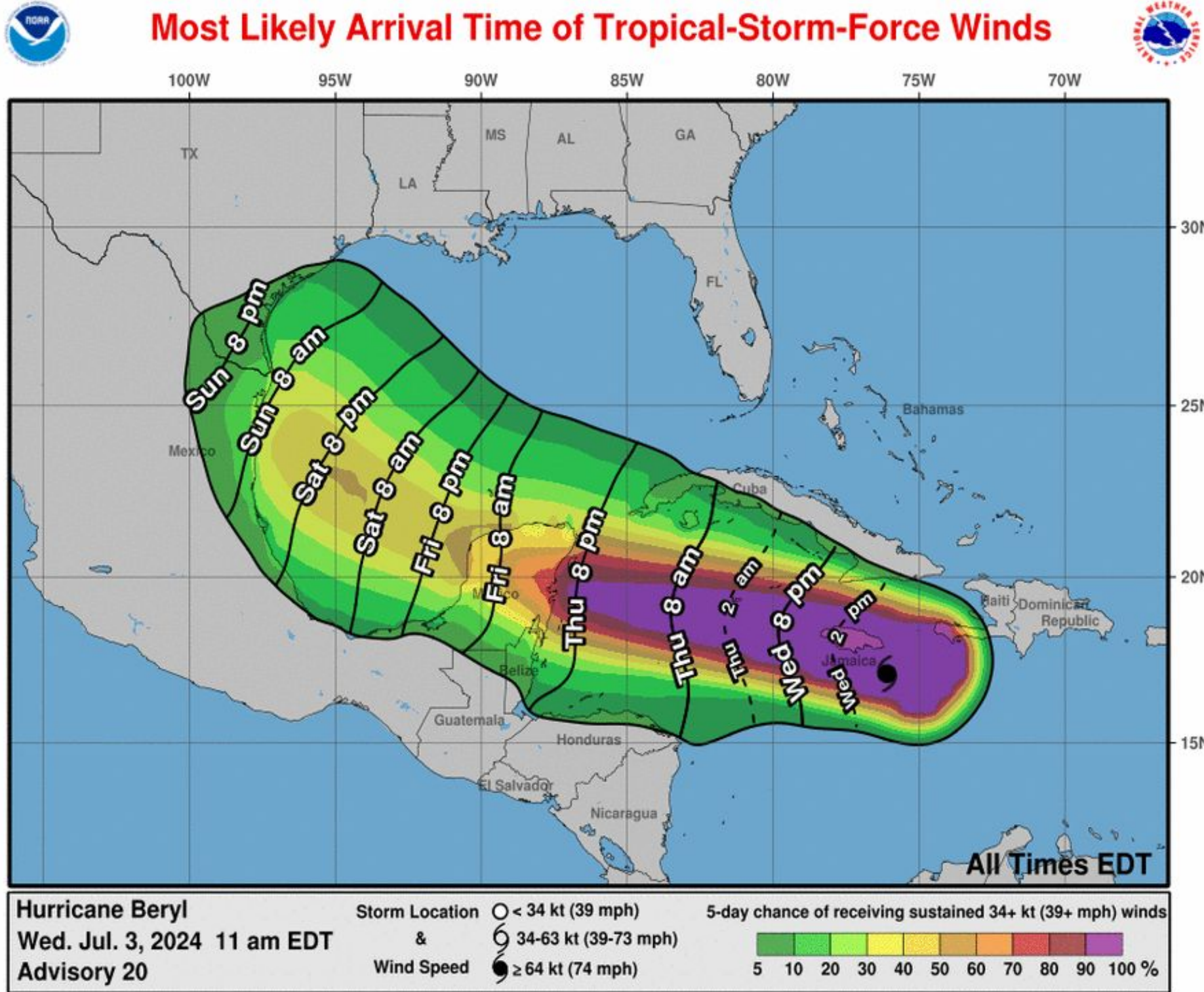
National Weather Service
Corpus Christi, TX



Most Likely Time of Arrival of TS Force Winds

July 3, 2024
11:30 AM

Hurricane Beryl



- The most likely time of arrival of Tropical Storm Force Winds for the Southeast Texas Coast is Sunday afternoon.
- However, this area could see Tropical Storm Force Winds as early as Saturday night.





Tropical Storm Wind Speed Probabilities

July 3, 2024
11:30 AM

Hurricane Beryl



Chance of Tropical Storm Force Winds

- Chances range from 5-10% across the region at this time. Expect these probabilities to continue to increase as the storm gets closer to making landfall.

Probability of Tropical Storm Force Winds

- Matagorda: 9% (*Increasing*)
- Port O'Connor: 10% (*Increasing*)
- Rockport: 5% (*Increasing*)
- Corpus Christi: 5% (*Increasing*)
- McCallen: 9% (*Increasing*)



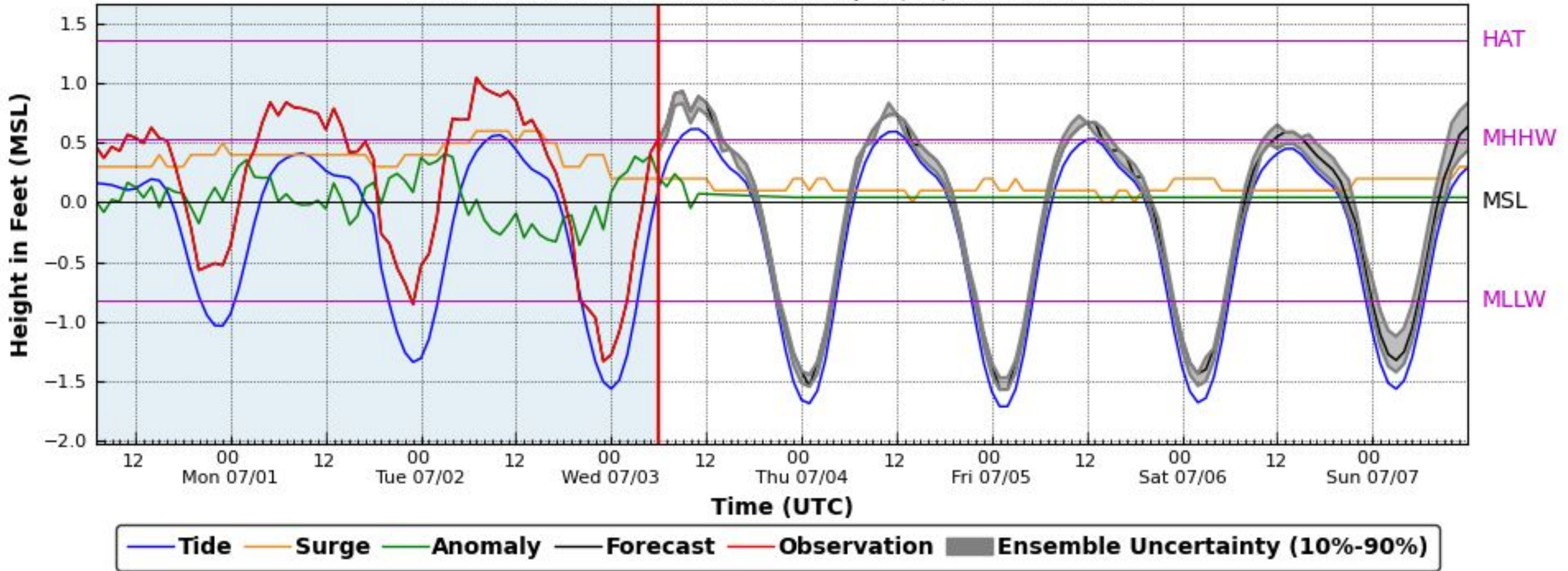


Coastal Flooding Possible

July 3, 2024
11:30 AM

Late This Weekend into Early Next Week

Aransas Aransas Pass TX 8775241, 07/03/2024 12:02 UTC



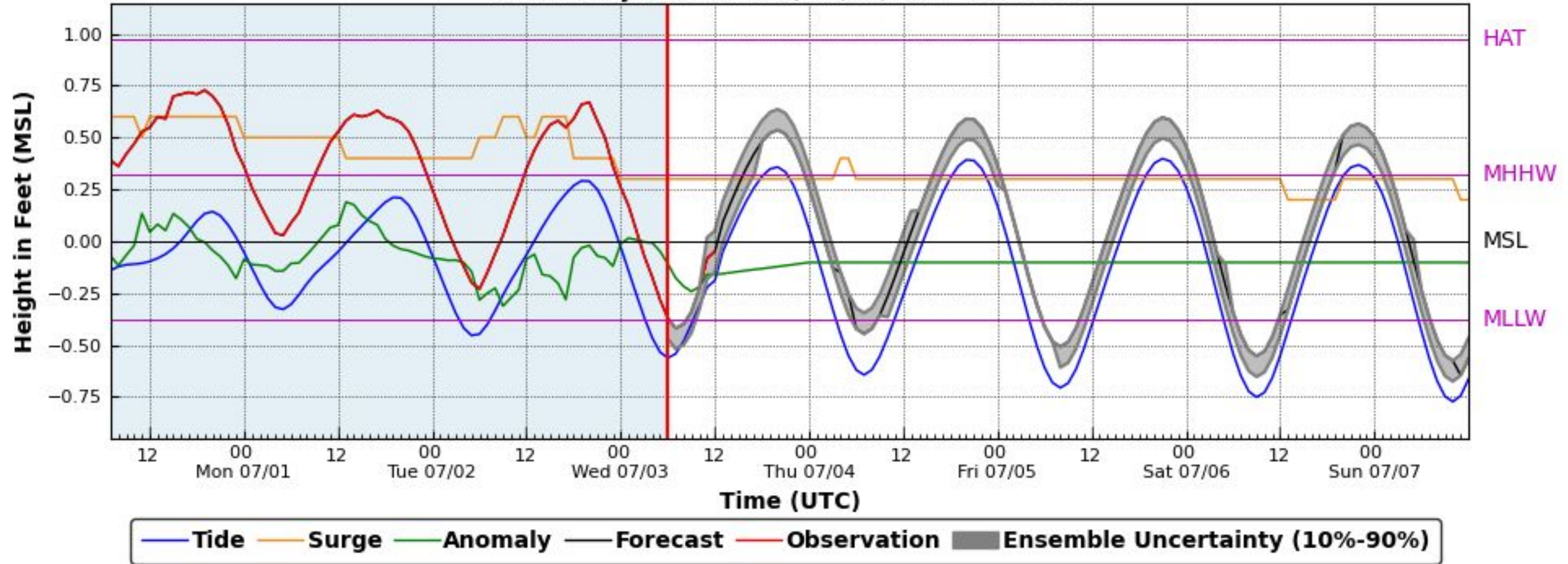


Coastal Flooding Possible

July 3, 2024
11:30 AM

Late This Weekend into Early Next Week

Nueces Bay TX 8775244, 07/03/2024 12:01 UTC





Excessive Rainfall Outlook

July 3, 2024
11:30 AM

Hurricane Beryl



- At least a 5% chance of flash flooding across the region on Sunday.





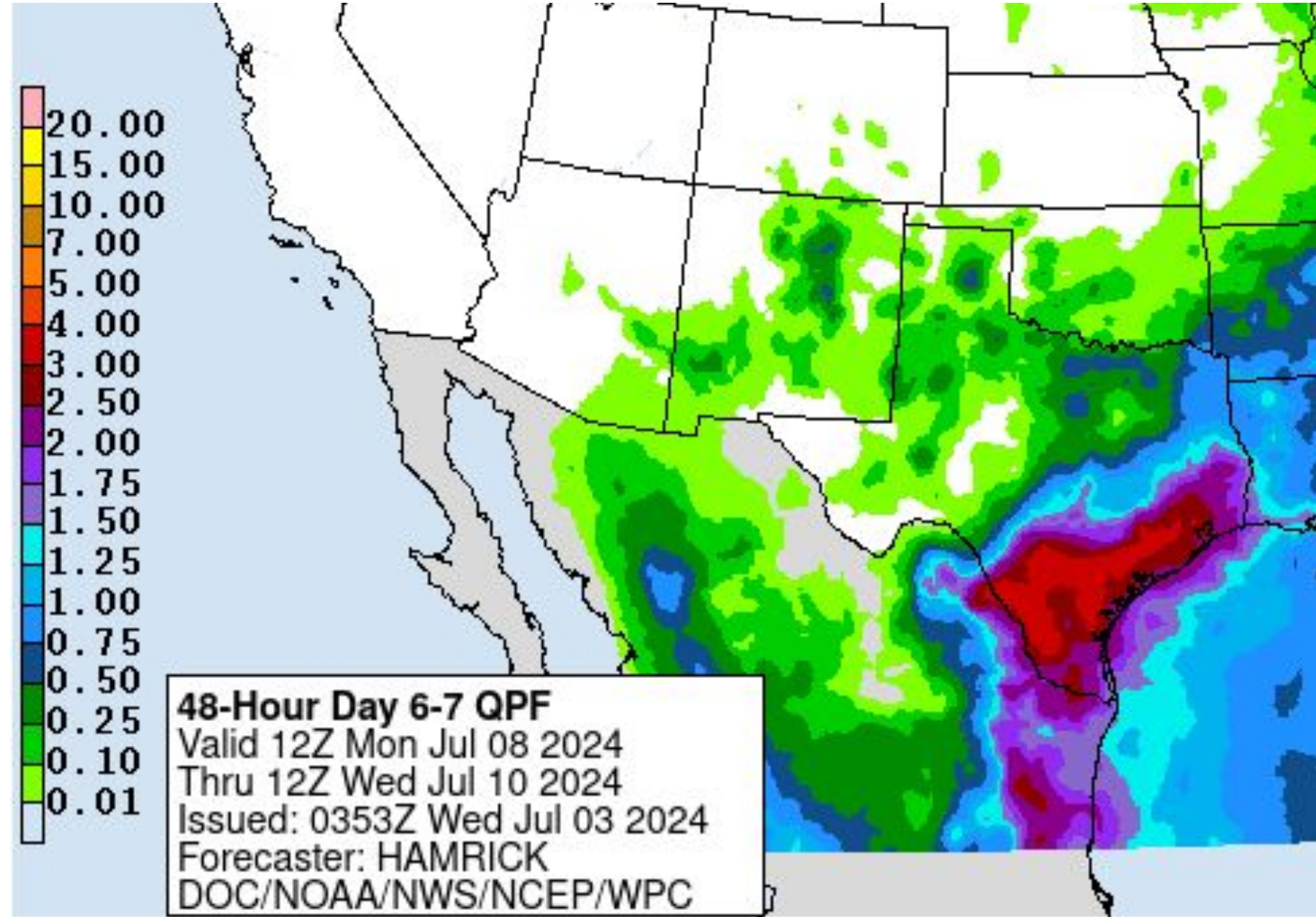
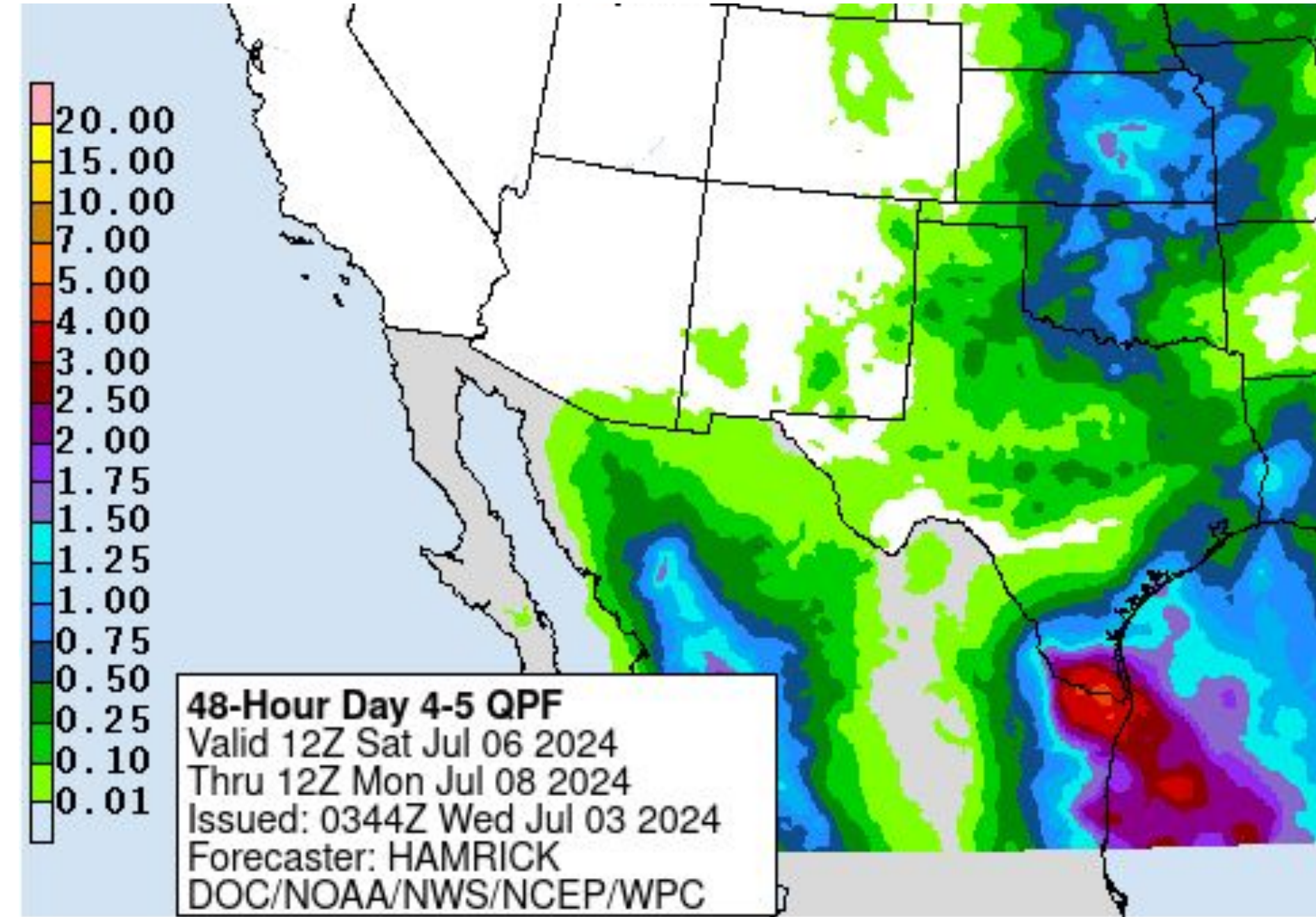
More Beneficial Rain Expected

July 3, 2024
11:30 AM

Hurricane Beryl

Saturday through Sunday Night

Monday through Tuesday Night





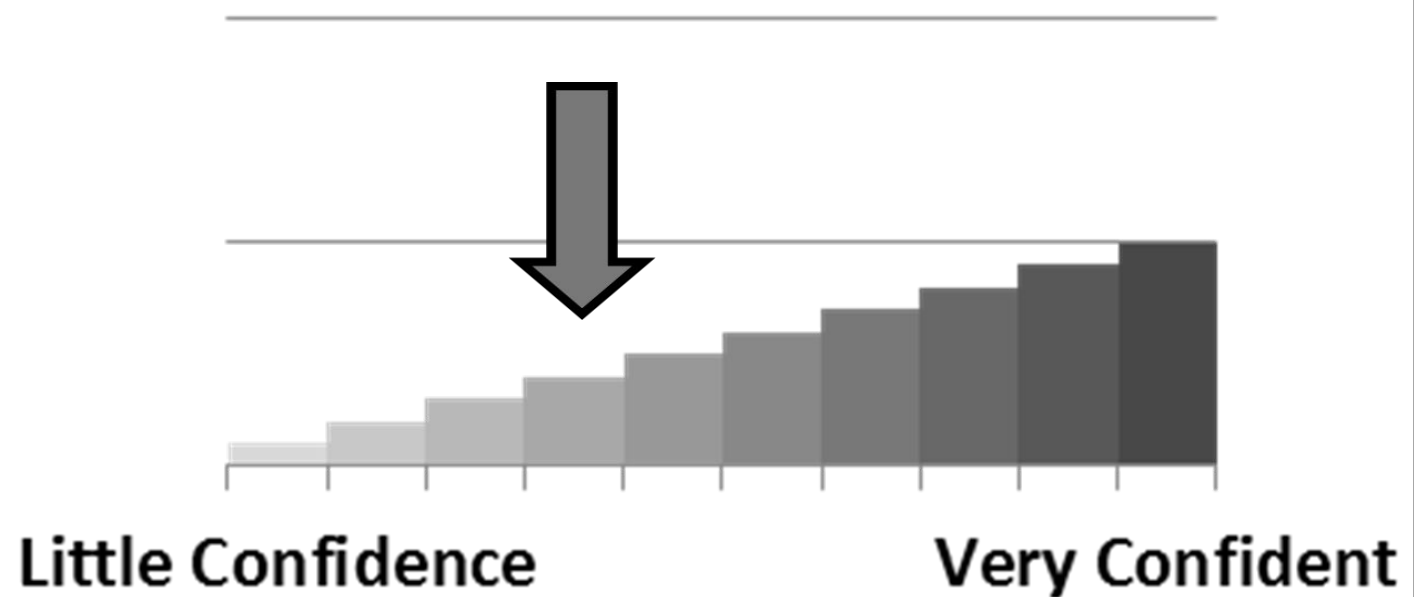
Key Take-Aways

July 3, 2024
11:30 AM

Hurricane Beryl

- Currently expected to make landfall along the far northeast Mexico Coast as a Category 1 Hurricane (plan for a Cat 2).
- Slight shift north could easily mean landfall along the South Texas Coast, still too much uncertainty at this time to know for sure.
- Earliest reasonable arrival of TS force winds is Saturday night and the most likely time is Sunday afternoon.
- Increase in rip current risk/tidal runup expected over the Holiday Weekend. This will make for dangerous swimming conditions!

Forecast Confidence



There is low confidence in both the exact track and intensity of Beryl once it emerges into the Southwest Gulf at some point Friday or Friday night. There is moderate to high confidence in increased swells/wave heights and a high risk of rip currents over the Holiday Weekend.





Local Resources

July 3, 2024
11:30 AM

Hurricane Beryl

Next Briefing:

11:30 AM

Thursday, July 4th



Web: <https://weather.gov/corpuschristi>



Phone: (361) 289-0959



E-mail: sr-crp.awareness@noaa.gov



Facebook: @nwscorpus



Twitter: @nwscorpus



YouTube: NWSCorpus

